



VIBRO/DYNAMICS® RFQ - Plastic Injection Molding Machine Data Sheet

Request for:  Quotation  Budgetary Estimate

**H&O DIE SUPPLY, INC**

7200 Interstate 20  
KENNE DALE TX 76060  
Telephone: 1-800-222-5441 214-630-6660  
Fax: 214-630-6693  
[www.hodie.com](http://www.hodie.com) Email: [sales@hodie.com](mailto:sales@hodie.com)

New Customer

Quote No. \_\_\_\_\_

Customer Number: \_\_\_\_\_ Date: \_\_\_\_\_

(For Office Use Only)

Salesman: \_\_\_\_\_

Territory: \_\_\_\_\_

Name: \_\_\_\_\_ Phone: \_\_\_\_\_  
Title: \_\_\_\_\_ Fax: \_\_\_\_\_  
Company: \_\_\_\_\_ Email: \_\_\_\_\_  
Address: \_\_\_\_\_ City: \_\_\_\_\_  
State/Province: \_\_\_\_\_ Postal Code: \_\_\_\_\_ Country: \_\_\_\_\_

Send quote via:

- Fax
- Email
- Mail

Please complete both sides and return to Vibro/Dynamics

**I. Machine Data**

Machine Manufacturer: \_\_\_\_\_ Machine Model Number: \_\_\_\_\_  
Machine Type (two-platen, toggle, three-platen): \_\_\_\_\_ Serial Number: \_\_\_\_\_

**II. Weight Data** English  Metric

Total Machine Weight (Dry): \_\_\_\_\_ Moving Weight: \_\_\_\_\_  
Maximum Velocity of Moving Platen: \_\_\_\_\_  
If there are robotics, are they attached to the floor or the machine? \_\_\_\_\_

If possible, indicate machine weight by section:	
Clamp End: _____	Injection End: _____
Maximum Die Weight: _____	Hydraulic Fluid: _____ <small>(7.5 lb/gal : 0.9 Kg/L)</small>
Total Weight: _____	Total Weight: _____
Please indicate number of mounting points by section:	
Clamp End: _____	Injection End: _____

Some machine builders have calculated minimum and maximum weights expected at each mounting support point as the moving platen and mold move from one end of the stroke to the other end. If you have a drawing that shows this information, please include a copy or provide us with the project engineer's name and phone number: \_\_\_\_\_

<i>For office use only</i>	Clamp End Only:
Heaviest Point: _____	Lightest Point _____

**III. Expected Installation Date:** \_\_\_\_\_

**IV. Please Provide A General Assembly Drawing, If Possible.**





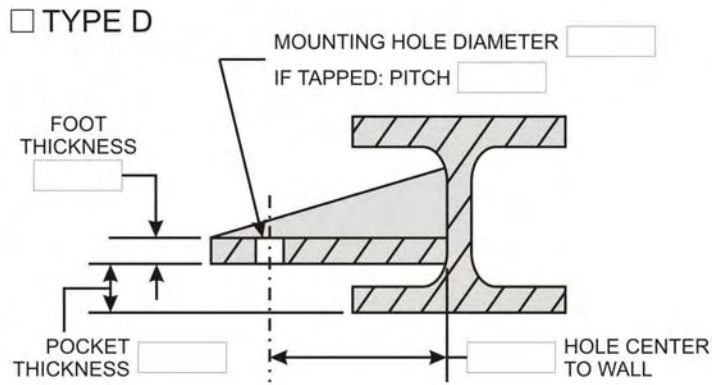
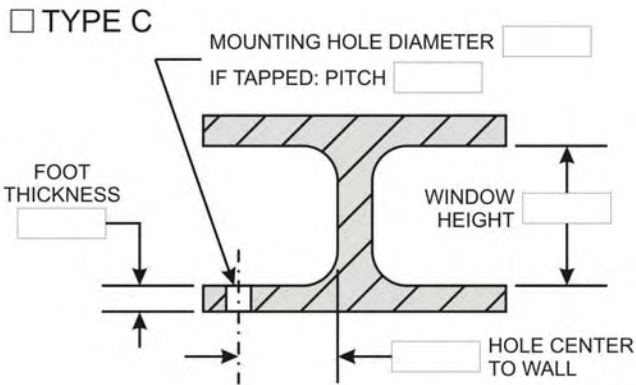
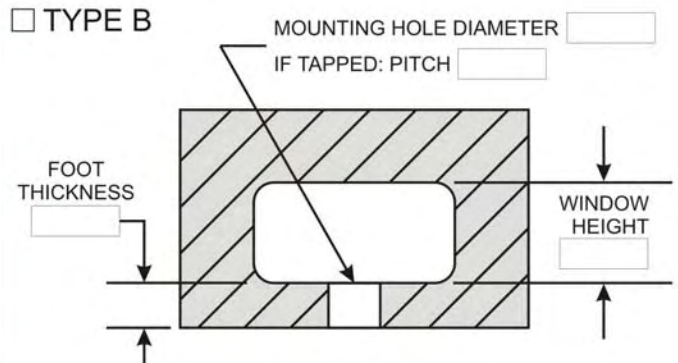
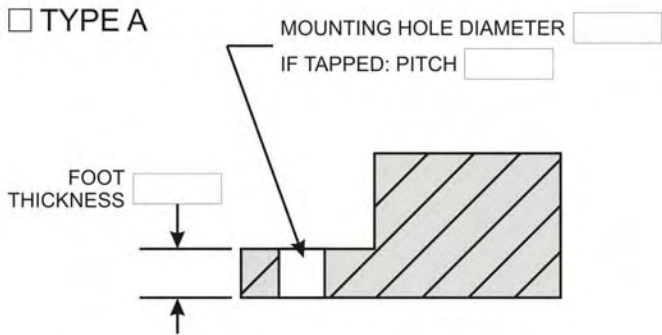
Machine Manufacturer: \_\_\_\_\_ Model Number: \_\_\_\_\_



V. CHECK TYPE OF MOUNTING POINT AND LIST APPLICABLE DIMENSIONS

For the following data, please indicate units of measure:  English  Metric

If blind tapped hole: Mounting Hole Diameter \_\_\_\_\_ Pitch \_\_\_\_\_ Depth \_\_\_\_\_



VI. Use the space below for sketches and/or comments on any special considerations.

